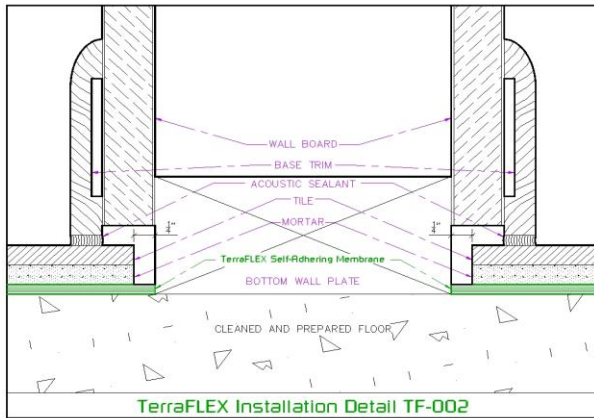


# TERRAFLEX 120 ANTI-FRACTURE AND SOUND CONTROL MEMBRANE



## 1. PRODUCT NAME

TERRAFLEX 120

## 2. COMPANY

Terra Building Products, LLC  
3433 Lithia-Pinecrest #301  
Valrico, FL, 33596  
Phone 866-77TERRA  
Fax 813-654-6662

## 3. PRODUCT DESCRIPTION

The TERRAFLEX Anti-Fracture and Sound Control Membrane System is a high performance acoustical underlayment that deadens impact noise through ceramic tile, marble, stone and other hard-surface material. It will also eliminate the transmission of cracks up to 1/2" from the substrate through the finished surface.

The TERRAFLEX System is a self-adhesive membrane approximately 1/8" thick and is made with 100% recycled material. **IT REQUIRES NO PRIMER.**

## Uses

- Eliminate transfer of non-structural substrate cracks to finished tile, marble, or stone surfaces.
- When hard surfaces are installed, reduces noise transmission and impact sound from one floor to the floor below.
- For installations requiring high performance, lightweight, and minimum height of installation above slab.

## Advantages

- Eliminates transmission of substrate cracks of up to 1/2" to the finished surface.
- ΔIIC rating of.....20
- IIC rating of ..... 50
- STC rating of.....50
- ASTM C627 rating .....Lt. Comm
- Light weight, easy to handle
- Self-adhesive system eliminates need to spread adhesive to install – saves time.
- Meets ANSI A118.12 specifications
- Will not support mold or mildew growth

## Suitable Substrates for interior application

- Exterior glue plywood and OSB
- Cement backer board
- Concrete
- Mortar beds
- Terrazzo
- Existing, well bonded tile and natural stone

## Packaging

- Rolls are 3 feet wide by 33.4 feet long and weigh 25 pounds
- Rolls are shipped 25 units per pallet

## Coverage

- Approximately 100 sq ft per roll

## Shelf Life

- Factory sealed rolls of TERRAFLEX are guaranteed to be of first quality for two years from date of manufacturer when stored between 40 and 100 degrees.

## Limitations

- Not for use on exterior applications
- May be used over expansion and control joints but surface material must have soft joint
- Not for use over particle board, luan, or Masonite® surfaces
- Floors must meet IRC & IBC requirements for finished surface material.

# **TERRAFLEX 120 ANTI-FRACTURE AND SOUND CONTROL MEMBRANE**

## **4. TECHNICAL DATA**

### **Applicable Standards**

- ANSI A 118.12
- ASTM C 627
- ASTM E 90
- ASTM E 492
- ASTM E 1170
- ASTM E 2179

## **5. INSTALLATION**

### **Surface preparation**

Concrete will have cured for a minimum of 28 days and will be dry and free from dust, oil, curing compounds, sealers and the like. Surface will be smooth and free of voids, sharp bumps and loose surface materials. Rough or uneven concrete surfaces should be made smooth.

Wood floor construction should be in conformance with the IRC and/or the IBC for the installation of brick, ceramic tile, or natural stone.

Construction of interior plywood floors should be with Exterior glue plywood in accordance with procedures outlined in ANSI A108.01 paragraph 3.4.3.

No Primer is required for the installation of the TerraFlex self-adhesive membrane. The floor should be swept thoroughly, damp mopped, or vacuumed to remove any dust or debris prior to installation.

### **Application**

#### *Perimeter Isolation*

All walls and building elements must be isolated from the floor surface. A ¼" gap around the perimeter wall of the entire acoustic installation must be maintained. See TCNA EJ171-09 for complete movement joint design essentials.

#### *Material Installation*

Place the TERRAFLEX membrane roll on the floor surface to be covered and roll out with protective backing in place. Cut and fit material and re-roll with protective wrap to the outside. Remove a

short section of wrap exposing the adhesive back. Carefully place the adhesive on the primed floor surface. Grab the protective backing from each side and slowly pull the roll along the pre-planned line allowing the adhesive side to contact the floor. Pull evenly to be sure there are no wrinkles or bubbles in the underlayment. Smooth surface of underlayment and apply even pressure to be sure of even contact with the floor surface. Be sure strips of TERRAFLEX are butted close together with no overlap and no gaps.

#### *Application of Tile or Natural Stone Surface*

Use a premium polymer fortified multipurpose thin set adhesive manufactured to ANSI A 118.4 or A118.11 standards.

## **6. AVAILABILITY AND COST**

### **Availability**

TERRAFLEX Anti-Fracture and Sound Control Membrane is available throughout the United States. For the source nearest you contact:

Phone: 866 77TERRA

Web: w3ig.net

### **Cost**

Contact a TERRAFLEX Distributor in your area

## **7. WARRANTY**

When installed in accordance with manufacturers and approved industry practice, TERRAFLEX is warranted for 10 years.

## **8. MAINTENANCE**

Once installed, TERRAFLEX anti-fracture and sound control membrane requires no maintenance.

## **9. TECHNICAL SERVICES**

Technical service is available through the TERRAFLEX website: [www.w3ig.net](http://www.w3ig.net) or by phone 24 hours a day – 7 days a week at 866-77TERRA

## **10. FILING SYSTEM**

Product information is available at the TERRAFLEX web site; [www.w3ig.net](http://www.w3ig.net)